



New Orleans-Baton Rouge Steamship Pilots Association

2805 Harvard Avenue, Suite 102 • Metairie, Louisiana 70006 • USA

February 20, 2018

Effective Wednesday, February 20, 2018, at 0800, NOBRA Dispatch will be accepting orders for loaded ships over thirty-six (36) feet to anchor in the Reserve Anchorage.

Pilots will not be required to stay onboard vessels with draft of thirty-six (36) feet or greater.

Pilots anchoring vessels in Reserve Anchorage with less than thirty-six (36) feet will be required to stay onboard and perform special services.

NOBRA has been monitoring anchored vessels in Reserve Anchorage since April 24, 2017, in an attempt to increase anchorage space within our route. At this time, the Board of Directors believes it is safe to reduce our draft restriction for Reserve Anchorage to thirty-six (36) feet. The Board will continue to monitor this anchorage on a trial basis. Please see the attached recent draft survey of the Reserve Anchorage.

MRTIS also has this anchorage detailed in their App.

Mile 137: Reserve Anchorage

An area 0.5 miles in length along the right descending bank of the river extending from mile 137.0 to mile 137.5 above Head of Passes. The width of the anchorage is 500 feet. The inner boundary of the anchorage is a line parallel to the nearest bank 300 feet from the water's edge into the river as measured from the LWRP. The outer boundary of the anchorage is a line parallel to the nearest bank 800 feet from the water's edge into the river as measured from the LWRP.

If you have any comments that could help determine if this anchorage is suitable to become permanent, please let a member of the Board of Directors know.

Very truly yours,

Capt. Stephen H. Hathorn
President

SHH/lbs
Attachment

Main Office

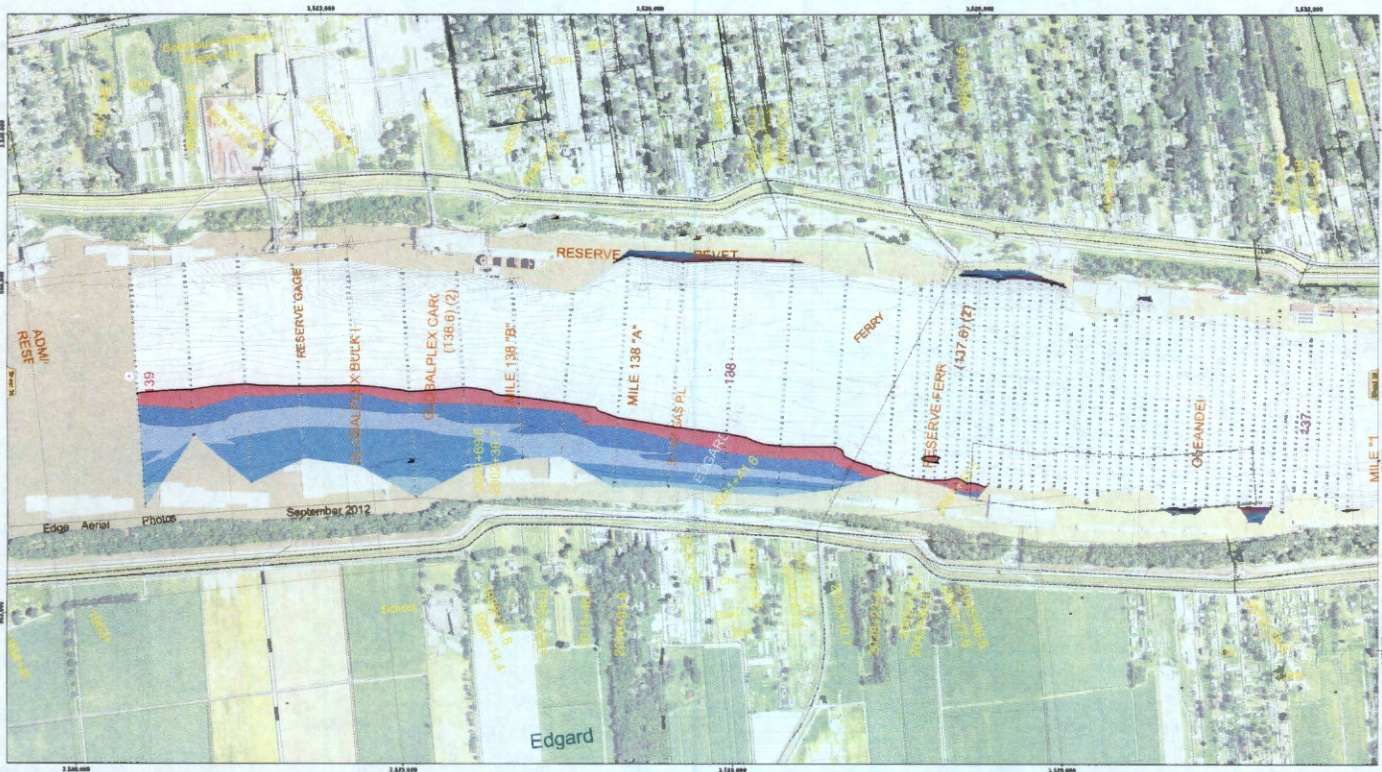
Phone: 504-832-1199
Billing Fax: 504-455-4328

Board of Directors

Phone: 504-219-2600
Fax: 504-456-6456

Marine Operations

Phone: 504-219-2611
Fax: 504-455-2942



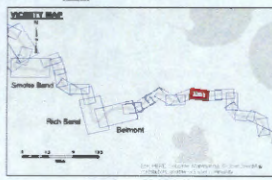
US Army Corps of Engineers
District: CEMVN

PROJECT: MISSISSIPPI RIVER - BR TO GULF
RESERVE - SHEET 2
NO. 37, REL. 20170328_C6
28 March 2017

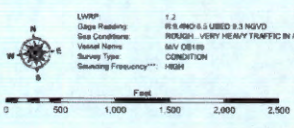
U.S. ARMY CORPS OF ENGINEERS
MISSISSIPPI RIVER - BR TO GULF
RESERVE - SHEET 2
NO. 37, REL. 20170328_C6
28 March 2017

MISSISSIPPI RIVER - BR TO GULF
RESERVE - SHEET 2
NO. 37, REL. 20170328_C6
28 March 2017

Sheet Reference Number
37 of 97



LEGEND	
--- Federal Navigation Channel	--- Cable Area
--- Federal Navigation Center Line	--- Placement Area
--- As-built Pipeline/Cable	--- Anchorage Area
--- Unconfirmed Pipeline/Cable	--- Obstruction Point
--- Project Depth Contour	--- Wecks-Submerged
--- Shoaling Area	--- Shoalst Soundings**
--- Beacon, General	--- Red Navigation Buoy
--- Green Navigation Buoy	



NOTES:
1. This project is a continuation of the work done on the Mississippi River - BR to Gulf project.
2. This project is a continuation of the work done on the Mississippi River - BR to Gulf project.
3. This project is a continuation of the work done on the Mississippi River - BR to Gulf project.
4. This project is a continuation of the work done on the Mississippi River - BR to Gulf project.
5. This project is a continuation of the work done on the Mississippi River - BR to Gulf project.
6. This project is a continuation of the work done on the Mississippi River - BR to Gulf project.
7. This project is a continuation of the work done on the Mississippi River - BR to Gulf project.
8. This project is a continuation of the work done on the Mississippi River - BR to Gulf project.
9. This project is a continuation of the work done on the Mississippi River - BR to Gulf project.
10. This project is a continuation of the work done on the Mississippi River - BR to Gulf project.