

Louisiana Maritime Association Product Announcements

Members, I am pleased to announce two new technology products that we hope will increase productivity and enable you to demonstrate superior value to your customers. The new 3-D sounding files make excellent educational tools for getting your staff members and customers up to speed on how dredging issues affect everyone. The new AIS tools help you and your customers locate ships and gain familiarity with common river landmarks and facilities while staying engaged with your web site and brand.

Locks
Algiers Lock Forebay
IHNC Lock Forebay
Harvey Lock Forebay
Deep Draft Crossings (Whole River Soundings)
Baton Rouge Front
Redeye
Sardine Point
Manchac Bend
Medora
Granada
Bayou Goula
Alhambra
Philadelphia Point
Smoke Bend
Rich Bend
Belmont
Fairview
Deep Draft Crossings (Channel Soundings Only)
Baton Rouge Front

Latest USACE Soundings Available in 3-D

The Louisiana Maritime Association is pleased to release the latest USACE sounding data for the Mississippi River in 3-D Google Earth format. If you do not already have Google Earth installed on your computer, you may download it [here](#). If you would like PDF versions of the sounding data, you can download them [here](#).

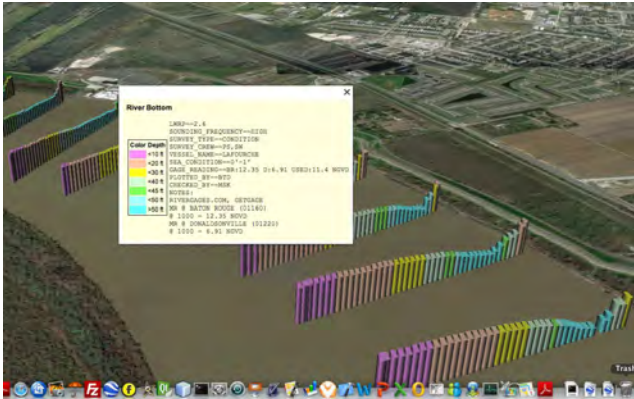


Fig 1. - Color Coded Bars Show the Contours of the River.

To download and view the 3-D sounding data in Google Earth, select a chart region from the list on the left. Most web browsers will automatically download the linked file and open it in Google Earth. You may also right click on the links and chose the "save as" option to download the kml file to your computer. On Mac computers the kml files will be saved to your "Downloads" folder. If you have any questions or need assistance in viewing the files please feel free to contact me.

[Redeye](#)

[Sardine Point](#)

[Medora](#)

[Granada](#)

[Bayou Goula](#)

[Alhambra](#)

[Philadelphia Point](#)

[Smoke Bend](#)

[Rich Bend](#)

[Belmont](#)

[Fairview](#)

New Orleans Harbor

[New Orleans Harbor - Sh. 1](#)

[New Orleans Harbor - Sh. 3](#)

Southwest Pass

[Offshore Dredged Material Disposal Site](#)

[MM 13.4-10.5 AHP](#)

[MM 10.5-7.7 AHP](#)

[MM 7.7-4.8 AHP](#)

[MM 4.8-2.0 AHP](#)

[MM 2.0-1.0 AHP](#)

[MM 1.0-3.7](#)

[MM 3.7-6.7](#)

[MM 6.7-9.6](#)

[MM 9.6-12.4](#)

[MM 12.4-15.2](#)

[MM 15.2-18.0](#)

[MM 18.0-21.0](#)

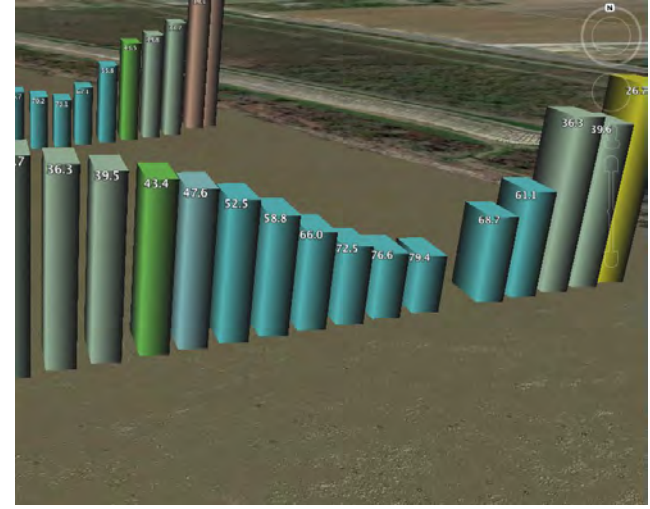


Fig 2. - Depth in Feet Layer Set to Visible in the Control Bar.

KML files are loaded into your Temporary Places by default. Each KML file contains two folders: River Bottom and Soundings. The River Bottom layer is checked by default and shows the shape of the river bottom while the Soundings folder shows the actual depth readings in feet.

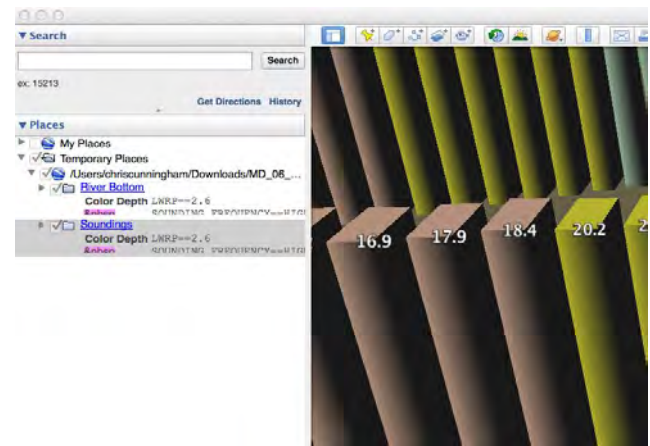


Fig 2. - KML Files are Loaded Into your Temporary Places Folder as two Layers.

Custom Branded AIS Software for Your Business Available

Members and associate members are eligible to receive a custom version of the Port Partners AIS tool. This service is a benefit of membership and I encourage you to contact me with your specific logo, branding, and feature requirements. Options available include: custom colors, points of interest, map layers, button styles, logo placement and much more!

A mobile friendly version of the Port Partners

